



EZ2

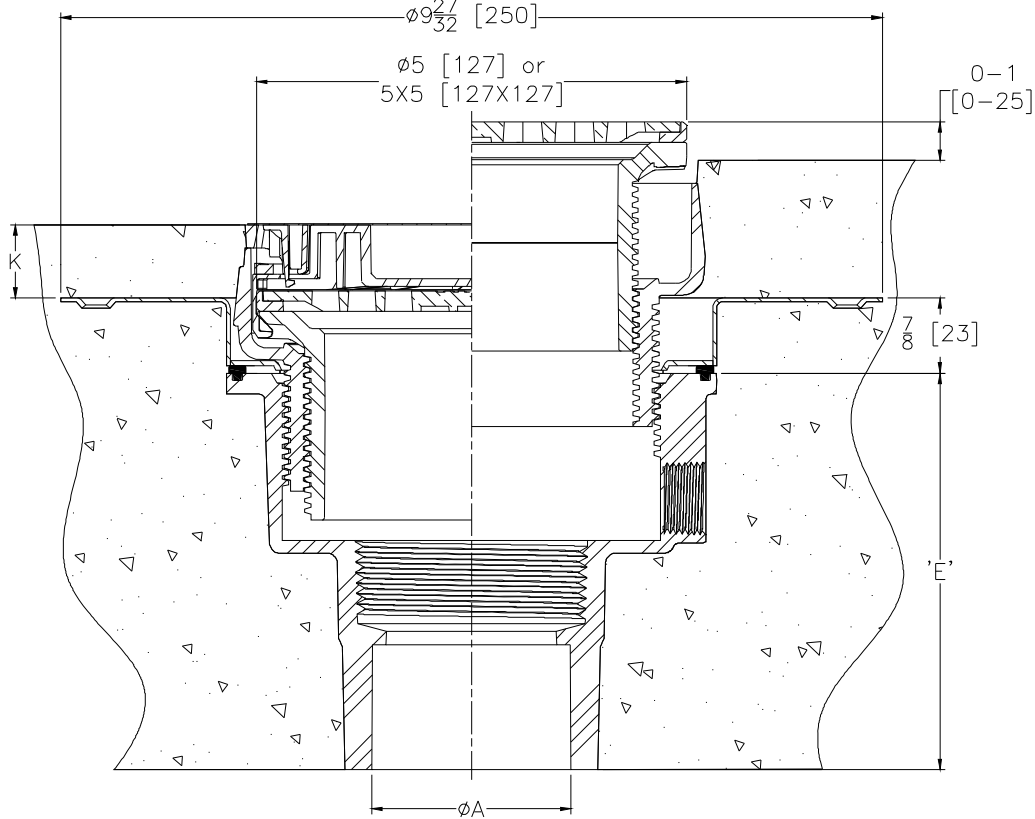
5" Top Assembly Adjustable Floor Drain with Deck Plate
and EZ1™ Technology

SPECIFICATION SHEET

TAG _____

**PATENT
PENDING**

Dimensional Data (inches and [mm]) are Subject to Manufacturing Tolerances and Change Without Notice



Dimensions in Inches [mm]						Approx. Wt. Lbs [kg]	Strainer Open Area Sq. In. [cm ²]	Strainer Type
Product Number		A	E	K				
PVC Body	ABS Body	Pipe Size	Body Height	Min	Max			
EZ2-PV2	EZ2-AB2	2-3 [51-76]	4-3/4 [121]	7/8 [22]	1-13/16 [46]	5 [2]	6-1/4 [40]	Nickel Bronze Round
EZ2-PV3	EZ2-AB3	3-4 [76-102]	3-3/4 [95]	7/8 [22]	1-13/16 [46]	5 [2]	6-1/4 [40]	Nickel Bronze Round
EZ2-PV4	EZ2-AB4	4 [102]	3-15/16 [100]	7/8 [22]	1-13/16 [46]	5 [2]	6-1/4 [40]	Nickel Bronze Round
EZ2-PV2-ST	EZ2-AB2-ST	2-3 [51-76]	4-3/4 [121]	1-27/32 [47]	1-31/32 [50]	6 [3]	9 [58]	Nickel Bronze Square
EZ2-PV3-ST	EZ2-AB3-ST	3-4 [76-102]	3-3/4 [95]	1-27/32 [47]	1-31/32 [50]	6 [3]	9 [58]	Nickel Bronze Square
EZ2-PV4-ST	EZ2-AB4-ST	4 [102]	3-15/16 [100]	1-27/32 [47]	1-31/32 [50]	5 [2]	9 [58]	Nickel Bronze Square
EZ2-PV2-SS	EZ2-AB2-SS	2-3 [51-76]	4-3/4 [121]	7/8 [22]	1-13/16 [46]	5 [2]	6-1/4 [40]	Stainless Steel Round
EZ2-PV3-SS	EZ2-AB3-SS	3-4 [76-102]	3-3/4 [95]	7/8 [22]	1-13/16 [46]	5 [2]	6-1/4 [40]	Stainless Steel Round
EZ2-PV4-SS	EZ2-AB4-SS	4 [102]	3-15/16 [100]	7/8 [22]	1-13/16 [46]	5 [2]	6-1/4 [40]	Stainless Steel Round
EZ2-PV2-ST-SS	EZ2-AB2-ST-SS	2-3 [51-76]	4-3/4 [121]	1-27/32 [47]	1-31/32 [50]	6 [3]	9 [58]	Stainless Steel Square
EZ2-PV3-ST-SS	EZ2-AB3-ST-SS	3-4 [76-102]	3-3/4 [95]	1-27/32 [47]	1-31/32 [50]	6 [3]	9 [58]	Stainless Steel Square
EZ2-PV4-ST-SS	EZ2-AB4-ST-SS	4 [102]	3-15/16 [100]	1-27/32 [47]	1-31/32 [50]	7 [3]	9 [58]	Stainless Steel Square

ENGINEERING SPECIFICATION:

Zurn EZ1™ floor and shower drain, PVC or ABS solvent weld body with bottom outlet and 1/2" [13] trap primer connection knock-out plug, stainless steel deck plate, and top assembly. EZ1™ drainage series is engineered to simplify product installation, comprised of concrete shield, up to 1" [25] of vertical post pour adjustment, pre-packaged shims for tilt correction and integrated self-contained square or round light duty strainer in nickel bronze or stainless steel with rough-in cover for protection during the concrete pour.

SUFFIXES

- ___ -CC Stainless Steel Clamp Collar
- ___ -EF 3/4 [19] Extension Frame
- ___ -TSP Trap Seal Protection Device (Size Matches Drain Outlet Selected, Not Available in 4") (See Z1072)
- ___ -U 2 - 3-1/4 [51-83] High Post-Pour Extension Adapter
- ___ -UP 1-3/4 [44] Pre-Pour Adjustment Extension Adapter
- ___ -VP Vandal-Proof Secured Top
- ___ -Y Sediment Bucket