

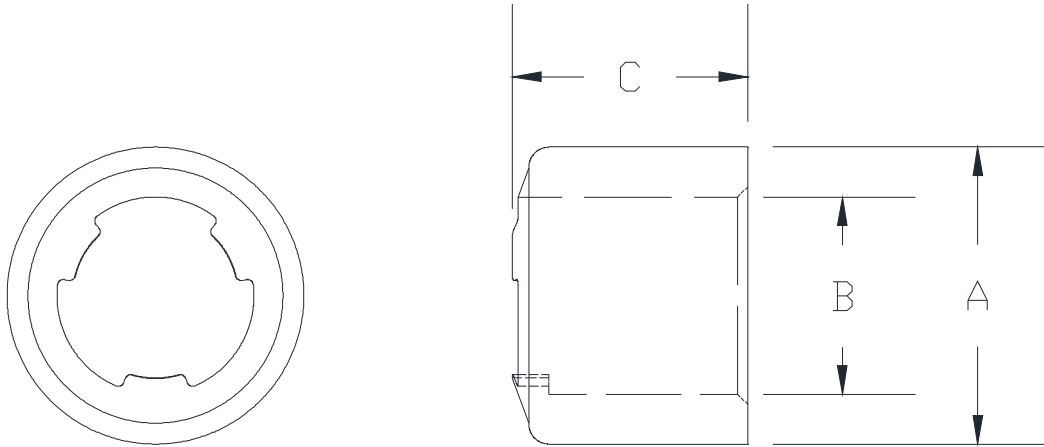


QER_X

SPECIFICATION SHEET

F1960 EXPANSION PEX REINFORCING RING WITH STOP TAG _____

Dimensional Data (inches and [mm]) are Subject to Manufacturing Tolerances and Change Without Notice



Part Number	F1960 Expansion PEX Reinforcing Ring w/Stop	Dimensions in Inches [mm]		
		A	B	C
QER2X	3/8" EX PEX	0.73 [19]	0.49 [12]	0.59 [15]
QER3X	1/2" EX PEX	0.88 [22]	0.63 [16]	0.68 [17]
QER4X	3/4" EX PEX	1.13 [29]	0.88 [22]	0.92 [23]
QER5X	1" EX PEX	1.42 [36]	1.13 [29]	1.17 [30]
QER6X	1-1/4" EX PEX	1.66 [42]	1.39 [35]	1.41 [36]
QER7X	1-1/2" EX PEX	1.92 [49]	1.64 [42]	1.67 [42]
QER8X	2" EX PEX	2.63 [67]	2.15 [55]	2.03 [52]

Engineering Specification: Zurn PEX® F1960 Expansion PEX Reinforcing Ring w/Stop

The QER_X is used with Zurn Non-Barrier Pex tubing in potable water applications. Molded from PEX with integral positioning tabs. These expansion reinforcing rings, as a system with Zurn PEX® tube and Zurn PEX fittings are pressure rated at 160 PSI at 73°F, 100 PSI at 180°F, and 80 PSI at 200°F.

Accessories

___ QEMT345

F1960 Manual Expansion Tool Kit - 1/2" to 1"