

For Residential and Commercial Applications

Job Name _____
 Job Location _____
 Engineer _____
 Approval _____

Contractor _____
 Approval _____
 Contractor's P.O. No. _____
 Representative _____

LEAD FREE*

Series LF45
Lead Free* Brass Quick-Connect
Union Elbows

Sizes: 1/2", 3/4" (15, 20mm)

Watts Series LF45 Quick-Connect elbows are designed and manufactured for many years of trouble free service. Series LF45 fittings are manufactured from Lead Free* brass and incorporate the proven Watts Quick-Connect patented (7,354,079 B2) O-ring and Collet design which allows for quick and easy connections without the use of installation or disconnection tools. The Lead Free* Brass Quick-Connect Fittings features Lead Free* construction to comply with Lead Free* installation requirements.

Specifications

Connection shall be made using Watts Series LF45 Brass Quick-Connect fittings with Integral Collet and O-ring guide. Fitting shall be able to fully rotate under pressure and allow for easy disconnect and reuse without tools. Lead Free* Quick-Connect Fittings shall comply with state codes and standards, where applicable, requiring reduced lead content.

Approvals



ASSE 1061-2006, NSF/ANSI 14, NSF/ANSI 61, CSA B137.5, ASTM F877

Ratings

80psi @ 240°F (5.2 bar @ 116°C)
 250psi @ 75°F (17.3 bar @ 24°C)



Notes

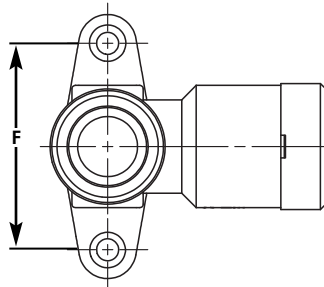
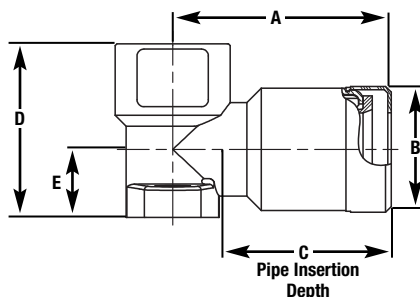
For compliance to ASSE 1061 a pipe insert (provided) must be used with each connection when joining PEX pipe.

A collet cover is provided for each CTS connection and is intended to prevent accidental disconnection of fitting during pull-through installations while the system is unpressurized. To disconnect the fitting, manually remove the collet cover and depress the collet.

*The wetted surface of this product contacted by consumable water contains less than one quarter of one percent (0.25%) of lead by weight.

Drop Ear Elbow – Type 21 CTS X FPT

FITTING	SIZE		WEIGHT													
	in.	mm	A		B		C		D		E		F		lbs.	kgs.
LF4521B-1008	1/2	15	1 7/8	48	1 1/16	28	1 1/2	37	1 1/2	37	9/16	15	1 13/16	46	.37	.17
LF4521B-1412	3/4	20	2 3/16	55	1 3/8	35	1 11/16	43	1 15/16	50	3/4	19	1 15/16	49	.58	.26



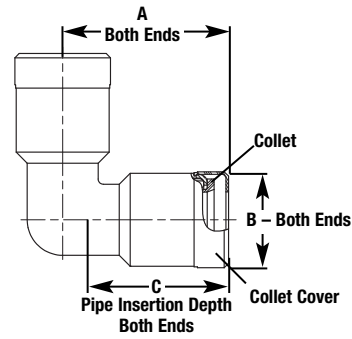
Watts product specifications in U.S. customary units and metric are approximate and are provided for reference only. For precise measurements, please contact Watts Technical Service. Watts reserves the right to change or modify product design, construction, specifications, or materials without prior notice and without incurring any obligation to make such changes and modifications on Watts products previously or subsequently sold.



Dimensions

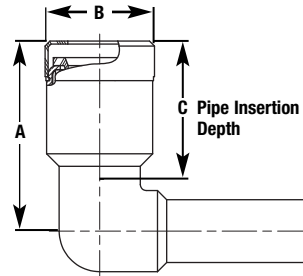
Union Elbow – Type LF 17 CTS X CTS

FITTING	SIZE						WEIGHT			
	in.	mm	in.	A mm	in.	B mm	in.	C mm	lbs.	kgs.
LF4517B-10	1/2	15	1 7/8	48	1 1/16	28	1 1/2	37	.30	.14
LF4517B-14	3/4	20	2 3/16	55	1 3/8	35	1 11/16	43	.50	.23
LF4517B-18	1	25	2 1/16	62	1 5/8	42	1 3/4	45	.80	.36



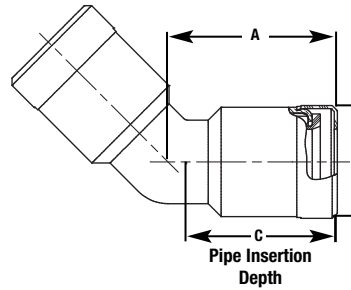
Stackable Elbow – Type LF 18 CTS x OD

FITTING	SIZE						WEIGHT					
	in.	mm	in.	A mm	in.	B mm	in.	C mm	in.	D mm	lbs.	kgs.
LF4518B-10	1/2	15	1 7/8	48	1 1/16	28	1 1/2	37	1 7/8	48	.29	.13
LF4518B-14	3/4	20	2 3/16	55	1 3/8	35	1 11/16	43	2 5/16	58	.57	.26
LF4518B-18	1	25	1 1/2	37	1 3/8	42	1 3/4	45	2 9/16	65	.72	.33



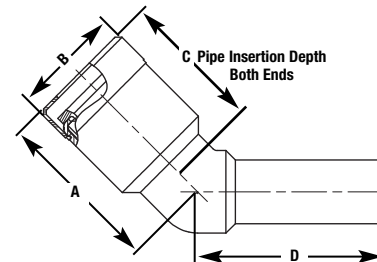
Union Elbow 45° – Type LF 22 CTS X CTS

FITTING	SIZE						WEIGHT			
	in.	mm	in.	A mm	in.	B mm	in.	C mm	lbs.	kgs.
LF4522B-10	1/2	15	1 5/8	42	1 1/16	28	1 1/2	37	.24	.11
LF4522B-14	3/4	20	1 15/16	49	1 3/8	35	1 11/16	43	.43	.20
LF4522B-18	1	25	2 1/16	52	1 5/8	42	1 3/4	45	.58	.26



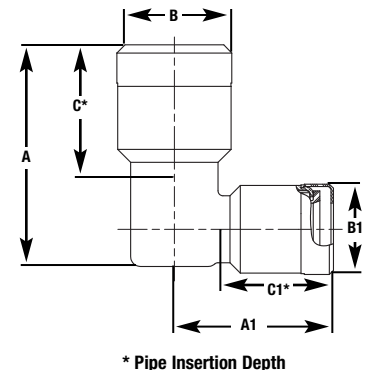
Stackable Elbow 45° – Type LF 22S CTS x OD

FITTING	SIZE						WEIGHT					
	in.	mm	in.	A mm	in.	B mm	in.	C mm	in.	D mm	lbs.	kgs.
LF4522SB-10	1/2	15	1 5/8	42	1 1/16	28	1 1/2	37	1 7/8	48	.24	.11
LF4522SB-14	3/4	20	1 15/16	49	1 3/8	35	1 11/16	43	2 5/16	58	.46	.21
LF4522SB-18	1	25	2	51	1 5/8	42	1 3/4	45	2 9/16	65	.58	.26



Reducing Union Elbow – Type LF 17R CTS X CTS

FITTING	SIZE								WEIGHT									
	in.	mm	in.	A mm	in.	A1 mm	in.	B mm	in.	B1 mm	in.	C mm	in.	C1 mm	lbs.	kgs.		
LF4517RB-1410	3/4 x 1/2	20 x 15	2 1/4	57	1 15/16	49	1 3/8	36	1 1/16	28	1 1/16	28	1 11/16	43	1 1/2	37	.43	.20
LF4517RB-1814	1 x 3/4	25 x 20	2 7/16	62	2 5/16	59	1 5/8	42	1 3/8	35	1 3/8	35	1 3/4	45	1 11/16	43	.69	.31



A Watts Water Technologies Company



USA: 815 Chestnut St., No. Andover, MA 01845-6098; www.watts.com

Canada: 5435 North Service Rd., Burlington, ONT. L7L 5H7; www.wattscanada.ca