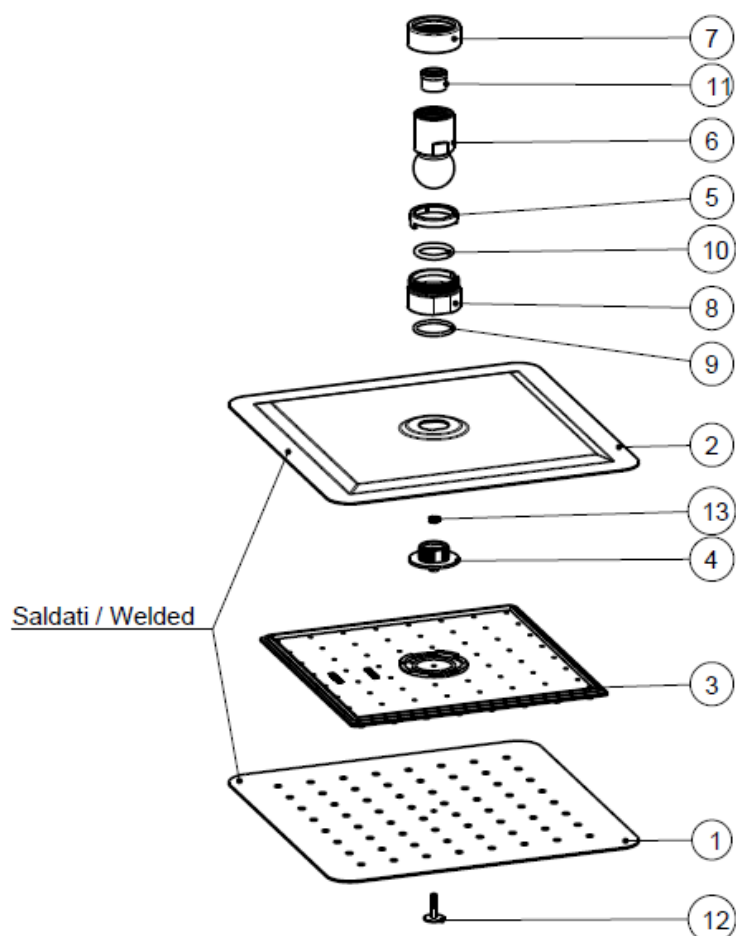


SCALA 1:1



15	Logo CSA DOE 1.75 gpm	1	-	09 0156	-
14	Logo IN2AQUA	1	-	09 0114	-
13	M3 nut	1	STAINLESS STEEL	03 1557	-
12	M3 screw	1	STAINLESS STEEL	03 1437	J9994013105
11	Flow Limiter	1	VARIED	80 0381	BFL-D15-1.75
10	ORing \varnothing 18x3	1	NBR 7018	02 0007-001	99980027
9	ORing \varnothing 21x2	1	NBR 7018	02 0007-061	-
8	Bush for crown	1	BRASS (Hpb59-3)	03 1084	-
7	Crown	1	BRASS (Hpb59-3)	03 0301	VA370305
6	Ball Joint 1/2" NPT	1	BRASS (Hpb59-3)	03 0078	V125405NPT
5	Safety ring	1	POM (Hostaform C9021)	01 0141	V1251NPT
4	Insert cover	1	BRASS (Hpb59-3)	03 1524	-
3	Nozzle headshower 200x200	1	SILICON (SIL60H21)	02 0230	-
2	Cover headshower 200x200	1	STAINLESS STEEL (SUS304)	03 1086	-
1	Faceplate headshower 200x200	1	STAINLESS STEEL (SUS304)	03 1085	-
POS.	DENOMINAZIONE / DESCRIPTION	Q.ty	MATERIALE / MATERIAL	DISEGNO / DRAWING	CODICE / CODE

in2aqua

in2aqua GmbH

Königstrasse 26 • 70173 Stuttgart, Germany
 Phone: +49 (0)7127 9296 141 • 1 800 257 6051
www.in2aqua.de • www.in2aqua.com • info@in2aqua.com