



OLYMPIA FAUCETS, INC.
3325 S. Garfield Ave.
Commerce, CA 90040
(888) 772-7701
www.olympiafaucets.com

**Model Number: K-5340, K-5342, K-5350,
K-5370, K-5372**

Warnings and Notes:

Check with local plumbing code requirements before installation.
This product should be installed by a local listed plumber.
Do not use plumbers putty on threads.

Installation Steps:

Two Handle Kitchen Faucet

Tools:



Adjustable Wrench



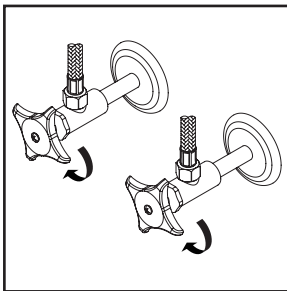
Plumbers Putty



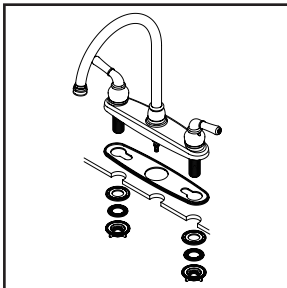
Teflon Tape



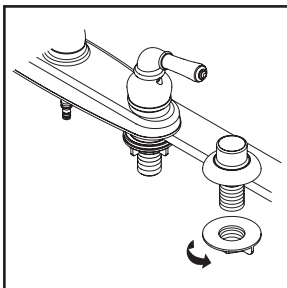
Rags



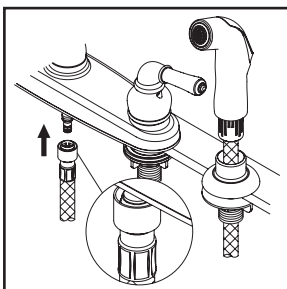
(1) Shut off the water supply. Remove old faucet. Clean mounting surface in preparation for new faucet.



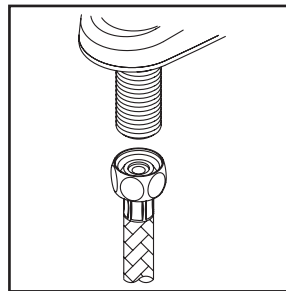
(2) Apply adequate plumbers putty along the boundary of base gasket. Align faucet with mounting holes and place faucet on the sink. Slide washers on shanks and secure the locknuts to the shanks from underneath the sink. Go to step (5) if faucet is without side spray.



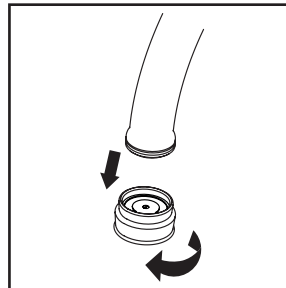
(3) Place side spray holder on mounting hole. Tighten locknut from underneath the sink to secure side spray holder.



(4) Lead side spray hose through side spray holder. Insert spray head hose quick connect adapter into faucet outlet hose end, push until a "click" is heard. Pull side spray hose downward to test engagement.



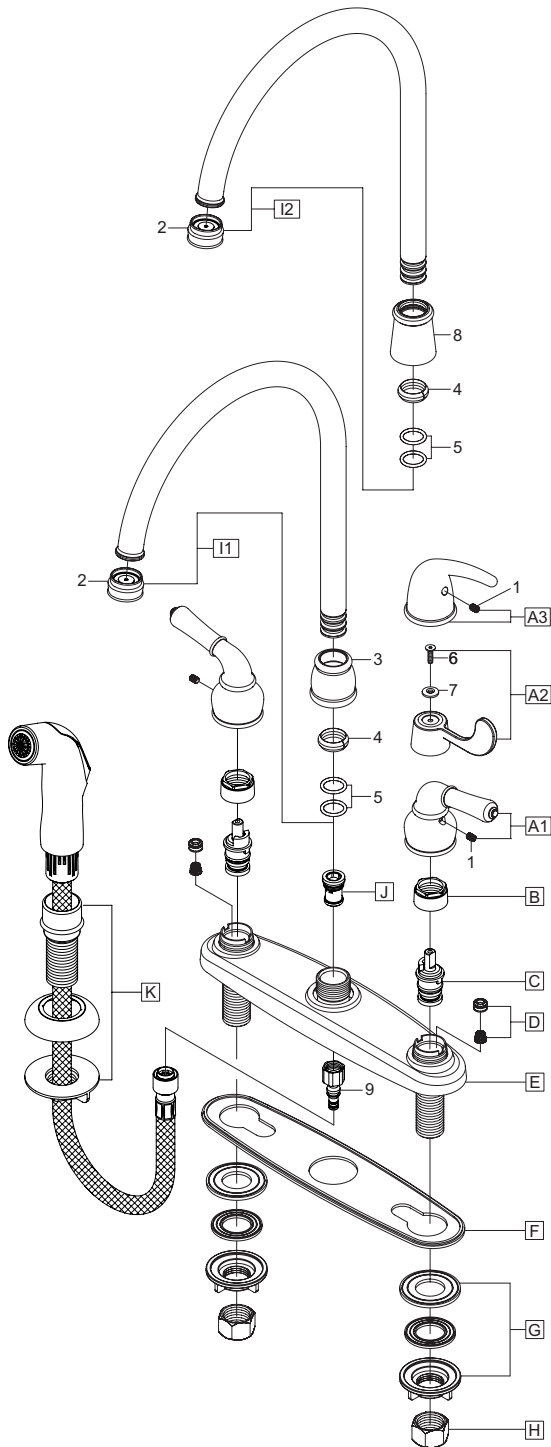
(5) When using stainless steel braided faucet supply hose; this faucet requires one end of the supply hose to have a 1/2" female IPS connection. The other end of this supply hose must match the thread on the water supply valve under your sink. Once you've identified the required size, carefully follow the manufacturer's installation instructions for each hose.



(6) Important: After installation is complete, remove the aerator. Turn on the water and allow both hot and cold water to run for at least one minute each. While water is running, check for leaks. Turn off the water and replace the aerator when finished.

Exploded Drawing:

* Note: Please specify finish/color when ordering.



	ITEM #	DESCRIPTION
A1	OP-190010C, H*	Lever Handle Cold, Hot (For K-5340, K-5342)
A2	OP-190014C, H*	ADA Handle, Cold, Hot (For K-5350)
A3	OP-190015C, H*	Lever Handle Cold, Hot (For K-5370, K-5372)
B	OP-490040	Bonnet Nut
C	OP-390004	Cartridge- Brass Post
D	OP-490041	Springs and Seats
E	OP-420025*	Deck Plate
F	OP-420026	Base Gasket
G	OP-520009	Mounting Locknuts & Washers
H	OP-590001	Supply Nuts
I1	OP-220004*	Gooseneck Spout
I2	OP-220005*	Gooseneck Spout (For K-5370, K-5372)
J	OP-420024	Diverter Piston (For K-5342, K-5372)
K	OP-420077*	Side Spray Assembly (For K-5342, K-5372)
1	OP-490029	Allen Screw
2	OP-490057*	1.5 GPM Aerator
3	OP-490028*	Spout Bonnet Nut
4	OP-490038	Spout Snap Ring
5	OP-490039	Spout O-rings
6	OP-450013	Handle Screw
7	OP-490001C, H	Cold & Hot Indicator
8	OP-450010*	Spout Bonnet Nut (For K-5370, K-5372)
9	OP-420083	Quick Connect Adapter



For more care information or trouble shooting inquiries about your Olympia product, Please call:
OLYMPIA FAUCETS, INC. (888) 772-7701
 Monday-Friday 8 AM to 8 PM EST (5 AM to 5 PM PST)
www.olympiafaucets.com