

**Bridge Style Kitchen Faucet with Sidespray**

**945-1**

**Features**

- Solid brass construction
- Bridge-style brass valve bodies
- Quarter-turn washerless ceramic disc valve cartridges
- ADA compliant traditional cross handles
- Swivel spout assembly with integral diverter assembly
- Solid brass pull-out sidespray assembly
- 6-3/8" (16.2 cm) spout height at outlet
- 9-7/16" (24.0 cm) spout reach (c-c)
- For 8" (20.3 cm) centers
- 1.8 gallons (6.8 liters) per minute maximum flow rate



**Codes / Standards Compliance**

Meets or exceeds the following at date of manufacture:

- ASME A112.18.1/CSA B125.1
- IAPMO/cUPC
- IPC
- NSF 61
- ADA
- ICC/ANSI A117.1
- Energy Policy Act of 1992

**Colors / Finishes**

- 10B: Oil Rubbed Bronze
- 15: Polished Nickel
- 15S: Satin Nickel - PVD
- 26: Polished Chrome
- Other: Refer to the Newport Brass catalog for additional color/finish options.

**Specified Model**

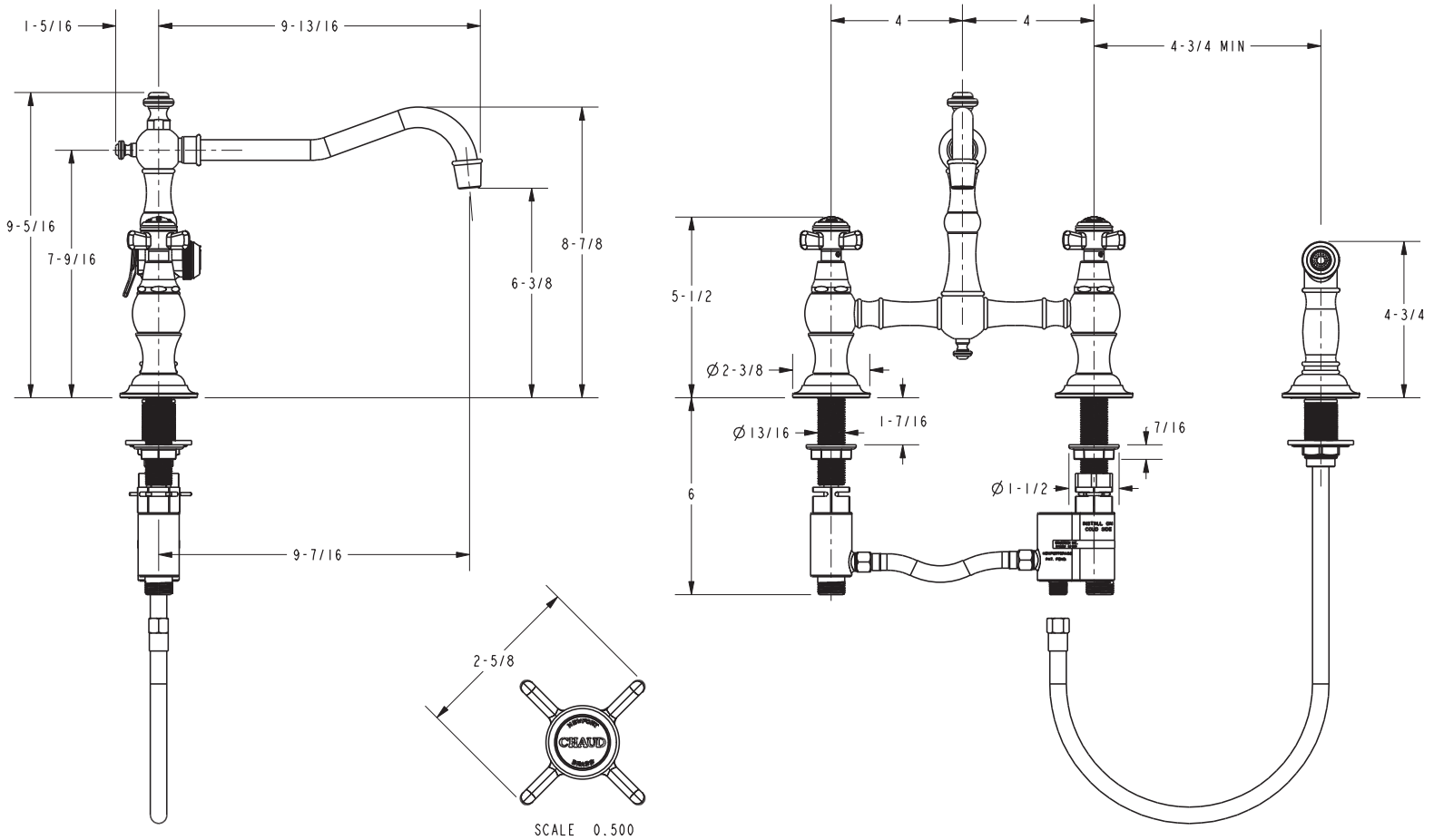
Model	Description	Colors   Finishes
945-1	Bridge Style Kitchen Faucet with Sidespray	<input type="checkbox"/> 10B <input type="checkbox"/> 15 <input type="checkbox"/> 15S <input type="checkbox"/> 26 <input type="checkbox"/> Other

**Product Specification:** Add "Color / Finish" suffix to Model number, below.

The Bridge Style Kitchen Faucet with Sidespray shall be made of solid brass construction. Faucet shall incorporate a swivel spout assembly with integral side-spray diverter assembly and feature bridge-style brass valve bodies with quarter-turn washerless ceramic disc valve cartridges. Faucet shall have a 1.8 gallons (6.8 liters) per minute maximum flow rate. Product shall be for 8" (20.3 cm) centers. Product shall incorporate a 6-3/8" (16.2 cm) spout height at outlet and a 9-7/16" (24.0 cm) spout reach (c-c). Faucet shall incorporate ADA compliant traditional cross handles. Bridge-Style Kitchen Faucet with Sidespray shall be Newport Brass Model 945-1/\_\_\_\_ .

# 945-1

## PRODUCT DIMENSIONS *(Units are in inches)*



### Fairfield Bridge Style Kitchen Faucet with Sidespray 945-1