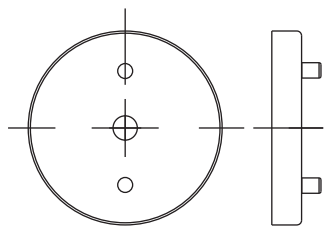


UL SPECIFICATION
 * FIXTURE SHALL BE LISTED FOR LOCATION ONLY AND LABELED AS SUCH.
 * FIXTURE MUST BE MANUFACTURED IN ACCORDANCE WITH UL STANDARD 1598.

PARTS SPECIFICATIONS
ITEM QTY DESCRIPTION

- A (1) SOCKET- UL LISTED/CSA CERTIFIED
 BASE=MEDIUM
 SOCKET= PORCELIN
 SEE LEAD WIRE FOR SOCKET WIRE SPEC.
- B (1) LEAD WIRE- 7" [180] FROM CANOPY
 UL LISTED/CSA CERTIFIED, AWG #18
 105%DC BLACK AND WHITE WIRE.
 STRIP 1/2 [12.7], SPLIT 3 [76.2].
 FROM TOP OF SCROLL.
 (SEE CHART FOR COLOR).
- C (1) GROUND WIRE- 7" [180] FROM CANOPY
 1/4 LAY COPPER GROUND WIRE.
 FROM TOP OF SCROLL.
 (SEE CHART FOR TINT).



FIXTURE NO.	MATERIAL	FINISH	LEAD WIRE	GROUND WIRE	UPC CODE	I2OF5	WATTAGE LABEL	INSTRUCTION SHEET	CUL LABEL	GLASS DESCRIPTION
623-3W-PC-G52	STEEL	POLISHED CHROME FOR 623-3W-PC-G52								
623-3W-GB-G52	STEEL	BRUSHED BRASS FOR 623-3W-PC-G52								FLORENTINE SCAVO
623-3W-BK-G52	STEEL	MATTE BLACK FOR 623-3W-BK-G52	BLACK AND WHITE	COPPER	842639007827	10842639007824				ETCHED WHITE
623-3W-SN-G52	STEEL	BRUSHED SATIN NICKLE FOR 623-3W-SN-G52	BLACK AND WHITE	COPPER	842639007780	10842639007787				

NO.	PART NO.	DESCRIPTION	REQ.

NOTICE: ANY DESIGN OR OTHER INFORMATION HEREON DEVELOPED BY THIS COMPANY IS CONFIDENTIAL MATERIAL AND EXCLUSIVE PROPERTY OF THE L.D. ALTA CO. DISCLOSURE OR REPRODUCTION REQUIRES THE WRITTEN CONSENT OF THE L.D. ALTA CO.

INNOVATIONS
 CREATIVITY MEETS EVOLUTIONARY DESIGN®

REV	DATE	REVISION RECORD	DATE	REVISOR	APPROVER	ECO#
D						
C						
B	07/21/08	CHANGE THE SIZE OF GLASS ACCORDING TO GLASS SAMPLE.	Mark			
A	07/07/08	CHANGE THE CONNECTOR SHAPE AND LOWER THE POSITION OF SOCKET	Mark			

DRAWN IN THIRD ANGLE PROJECTION	*mm* DIMENSION INDICATED IN [] DIMENSION IN [] IS FOR REF. ONLY			
	TOLERANCES (EXCEPT AS NOTED)			
DECIMAL	ANGULAR	FRACTIONAL	SCALE	
NONE ±.031	± 1/2°/D	± 1/32	FULL	
.XX ±.015				
.XXX ±.005				
DATE	DRAWN BY	CHECKED BY	APPROVED BY	
25/06/019	SSL	X	X	

TITLE		1LT VANITY	
PART NO.	ARC BAR	REV.	
ITEM NO.	653-1S-14	REV.	B