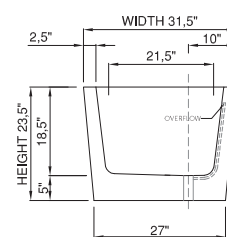
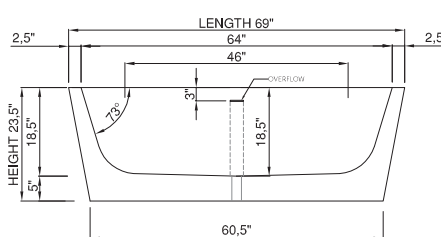
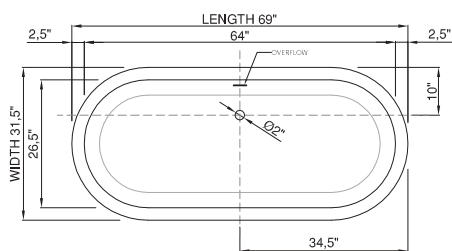




wide-edge



Price: \$7 990.00  
 Size (l) x (w) x (h): 69.0" x 31.5" x 23.5"  
 Waste to floor: 5.0"  
 Water capacity: 69.0 GAL  
 Overflow: Internal overflow  
 Material: DADOquartz®  
 Finish: Matte / Polished

Maximum water level: 16.0"  
 Base dimensions: 60.5" x 27.0"  
 Edge width: 2.5"  
 Waste diameter: 2.0"  
 Weight: 298.0 LBS

#### Shipping information

Packing dimensions: 71.0" x 35.0" x 32.0"  
 Shipping mass: 408.0 LBS